

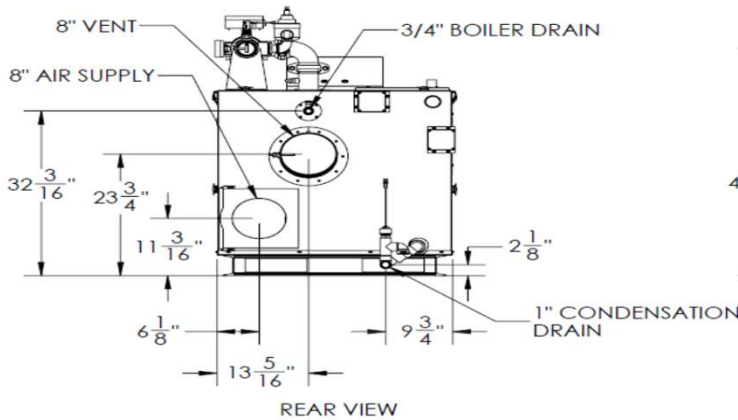
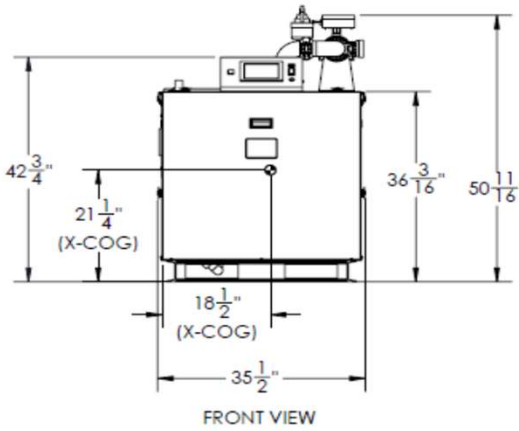
# AMP CONDENSING BOILERS - SUBMITTAL DATA SHEET

RATINGS AND CAPACITIES	
Input - Low Fire .....	250,000 BTU/HR
Input - High Fire .....	1,250,000 BTU/HR
Output - High Fire .....	1,212,500 BTU/HR
Boiler Horsepower .....	36.2 BHP
Thermal Efficiency .....	97.0%
Low Fire Thermal Efficiency .....	Up to 99%
Heating Surface .....	91.6 Sq.Ft.
Water Content .....	11.0 Gallons
Fuel .....	
Natural Gas or Propane	
Firing Rate .....	Full Modulation
Burner Turndown .....	5:1
Low NOx Emissions .....	< 10 ppm
Inlet Gas Pressure (NG) .....	4" wc Min.
Inlet Gas Pressure (Propane) .....	8" wc Min.
	14" wc Max.
Shipping Weight, Approximate .....	922 lbs

ASME Section IV (Max 160 PSIG / 210 °F)
ETL Certified to ANSI Z21.13 / CSA 4.9
ETL Certified to UL 795 / CSA 3.1

DIMENSIONS / CONNECTIONS	
- Height .....	42-3/4" (Note 1)
- Width .....	34-1/4" (Note 2)
- Length .....	45-1/2" (Note 3)
- Supply Connection .....	3" Grooved
- Return Connection .....	2-1/2" Grooved
- Vent / Air Intake Connections .....	8"
- Gas Connection .....	1" NPT

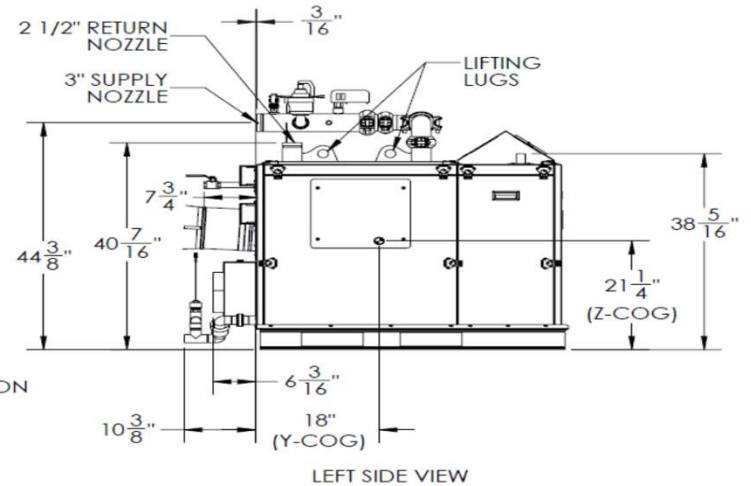
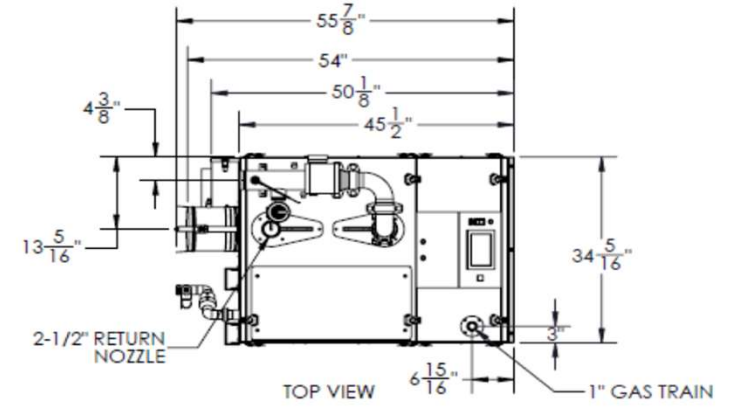
STANDARD EQUIPMENT	
- ASME Stainless Steel Heat Exchanger	
- Stainless Steel Pre-Mix Burner	
- Variable Speed Combustion Blower	
- Concert Control™ (24v)	
- High Limit Temperature Control, Manual Reset	
- Water Flow Switch	
- Low Water Cutoff, Manual Reset	
- Condensate Trap	
- Blocked Condensate Switch	
- ASME Pressure Relief Valve	
- Pressure / Temperature Gauge	
- Supply & Return Temperature Sensors	
- Flue Gas Temperature Sensor	
- Air Vent Valve	
- Modulating Gas Valve	
- Direct Spark Ignition and UV Scanner	
- High/Low Gas Pressure Switches, Manual Reset	
- Combustion Air Switch	
- Blocked Vent Switch	
- 120-208-240v/1/60 Line Voltage	
- Amp Draw: 120v (11.0); 208v (7.4) and 240v (6.5)	
- Category II and IV Venting	
- Individual or Common (Engineered) Vent System	
- CPVC, Polypropylene & Stainless Steel Acceptable *Material	
- Sealed or Room Combustion Air Intake	
- Up to 300 ft equivalent venting / air intake combined	



NOTE:  
 - CENTER OF GRAVITY LOCATION

FLOWS AND PRESSURE DROPS		
Delta T	Flow (GPM)	r P (Ft. Hd)
20°F r T	121	16.0
25°F r T	97	11.0
30°F r T	81	7.2
35°F r T	69	6.1
40°F r T	61	5.2
45°F r T	54	3.8
50°F r T	50	3.0
55°F r T	44	2.8

- NOTES:
1. Height dimension is from floor to top of control box.
  2. Width does not include jacket butterfly clips that require 3/4" +/- clearance on each side.
  3. Length is the measurement of the boiler skid base.
  4. Dimensions shown are for reference only



\* 1. Flue system material shall be capable of continuous operation at 210°F or higher and shall be certified to UL 1738 – venting system for gas-burning appliances cat III, III and IV.

## AMP-1250

PROPERTY OF  
**THERMAL SOLUTIONS**  
Manufactured Equipment for 100 Years

PO BOX 3244 | LANCASTER, PA 17601  
 INNOVATIVE EQUIPMENT FOR  
 HOT WATER SYSTEMS  
 WWW.THERMALSOLUTIONS.COM

Updated 1/26/2024